

Fulflo® SB Filter Vessels

ASME code single and multiple bag vessels for high flow rates and high solids retention

Constructed to handle flow rates of up to 1120gpm (4240 lpm), the Fulflo® SB series of bag and strainer filter vessels provides excellent filtration in a wide range of industrial and chemical applications. All details of design, materials, construction and workmanship of the SB vessel series conform to ASME code and are available in non-code design and construction.



Contact Information

Parker Hannifin Corporation
Industrial Process Filtration - N.A.
118 Washington Avenue
Mineral Wells, TX 76067

phone +1 940 325 2575
industrialprocess.na@parker.com

www.parker.com/industrialprocess

Benefits

- Accepts “C” style flex band bags for optimized independent seal
- Built in accordance with ASME (U or UM stamp) Boiler and Pressure vessel code
- Maximum design pressure is 150psi (10.3bar) or 300psi (20.7bar)
- Available in carbon steel, 304 stainless steel, or 316 stainless steel
- Single O-ring seal closure design assures quick, positive cover seal
- Swing bolts with hexnuts for fast, easy opening and closing of cover

- Buna-N standard O-ring with Viton® elastomer, and fluoropolymer elastomer O-rings also available
- Positive bag media seal prior to sealing housing

Applications

- Potable Water
- Process Water
- Coatings
- Lubricants
- Coolants
- Cutting Oils
- Solvents



ENGINEERING YOUR SUCCESS.

Fulflo® SB Filter Vessels

Design Specifications

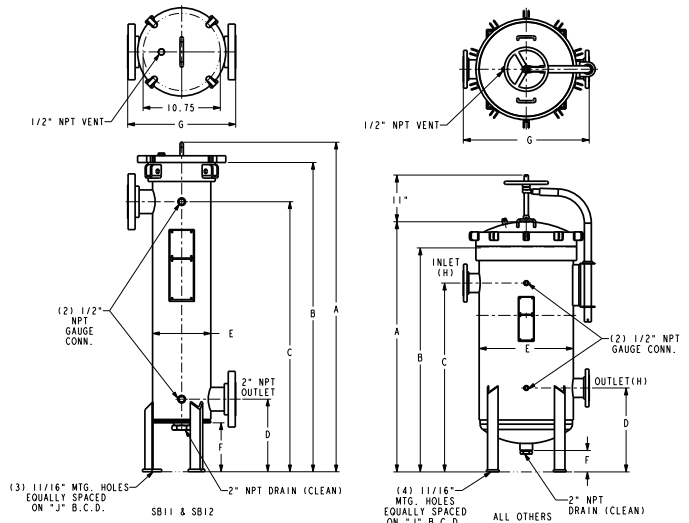
| Model | Maximum Flow† (gpm) | Dimensions (in.) | | | | | | | | | Shipping Wt. (lbs) |
|-----------|---------------------|------------------|-------|-------|-------|-------|------|-------|------|-------|--------------------|
| | | A | B | C | D | E | F | G | H | J | |
| SB11-2 | 80 | 34.88 | 30.69 | 26.75 | 10.75 | 8.63 | 7.31 | 10.75 | 2.00 | 7.81 | 180 |
| SB11-2F | 80 | 34.88 | 30.69 | 26.75 | 10.75 | 8.63 | 7.31 | 14.88 | 2.00 | 7.81 | 180 |
| SB12-2 | 160 | 47.88 | 43.69 | 39.75 | 10.75 | 8.63 | 7.31 | 10.75 | 2.00 | 7.81 | 200 |
| SB12-2F | 160 | 47.88 | 43.69 | 39.75 | 10.75 | 8.63 | 7.31 | 14.88 | 2.00 | 7.81 | 200 |
| SB12-3F | 160 | 48.81 | 44.63 | 40.00 | 10.75 | 8.63 | 7.31 | 16.00 | 2.00 | 7.81 | 200 |
| SB31-3FK1 | 240 | 43.00 | 38.25 | 32.00 | 17.00 | 18.44 | 6.00 | 26.00 | 3.00 | 17.75 | 600 |
| SB32-4FK1 | 480 | 56.00 | 51.25 | 45.00 | 17.00 | 18.44 | 6.00 | 26.00 | 4.00 | 17.75 | 650 |
| SB41-4FK1 | 320 | 43.50 | 38.63 | 32.00 | 17.00 | 20.44 | 6.00 | 28.00 | 4.00 | 19.79 | 670 |
| SB42-4FK1 | 640 | 56.50 | 51.63 | 45.00 | 17.00 | 20.44 | 6.00 | 28.00 | 4.00 | 19.79 | 720 |
| SB42-6FK1 | 640 | 60.19 | 55.13 | 47.00 | 18.00 | 20.44 | 6.00 | 30.00 | 6.00 | 19.79 | 740 |
| SB52-6FK1 | 800 | 60.50 | 54.50 | 45.00 | 20.00 | 22.44 | 6.00 | 30.00 | 6.00 | 21.71 | 700 |
| SB62-8FK1 | 960 | 64.00 | 58.00 | 48.00 | 22.00 | 26.00 | 5.00 | 36.00 | 8.00 | 25.30 | 1105 |
| SB72-6FK1 | 1120 | 59.75 | 53.75 | 45.00 | 20.00 | 26.00 | 5.00 | 34.00 | 6.00 | 25.30 | 1070 |
| SB72-8FK1 | 1120 | 64.00 | 58.00 | 48.00 | 22.00 | 26.00 | 5.00 | 36.00 | 8.00 | 25.30 | 1105 |
| SB82-8FK1 | 1440 | 64.56 | 58.00 | 48.00 | 23.25 | 28.44 | 5.00 | 38.00 | 8.00 | 27.88 | 1180 |
| SB92-8FK1 | 1440 | 66.75 | 60.00 | 50.00 | 24.00 | 30.56 | 6.00 | 40.00 | 8.00 | 29.80 | 1180 |

†Actual flow rate is dependent on fluid viscosity, micron rating, contaminant and media type. Consult flow charts for each application.

Maximum Operating Conditions

| Material of Construction | Max. Operating Pressure (psi @ 250 °F)† | Max. Design Temp.†† | Configs. |
|--------------------------|---|---------------------|----------|
| Carbon Steel | 150psi (10.3bar) | 500°F (260°C) | SB |
| Carbon Steel | 300psi (20.7bar) | 500°F (260°C) | HSB |
| 304 Stainless Steel | 150psi (10.3bar) | 300°F (150°C) | SB |
| 304 Stainless Steel | 300psi (20.7bar) | 300°F (150°C) | HSB |
| 316 Stainless Steel | 150psi (10.3bar) | 400°F (204°C) | SB |
| 316 Stainless Steel | 300psi (20.7bar) | 400°F (204°C) | HSB |

† Operating temperature limited by standard O-ring material and exterior paint.



Optional Shell O-Ring/Gasket* refer to price book for details.

Ordering Information

| Material | | Design Series | | Number of Bags | | Bag Length | | Inlet Outlet Flange Size | | Coverlift Option | |
|----------|---------------------|---------------|-------------|----------------|-------------|------------|-------------|----------------------------|---------------|------------------|-------------|
| Code | Description | Code | Description | Code | Description | Code | Description | Code | Description | Code | Description |
| None | Carbon Steel | Blank | 150psi | 1 | 1 bag | 1 | Single | None | NPT | Blank | None |
| 4 | 304 Stainless Steel | H | 300psi | 3 | 3 bags | 2 | Double | 2F | 2 inch flange | K1 | Mechanical |
| 6 | 316 Stainless Steel | | | 4 | 4 bags | | | 3F | 3 inch flange | K2 | Hydraulic |
| | | | | 5 | 5 bags | | | 4F | 4 inch flange | | |
| | | | | 6 | 6 bags | | | 6F | 6 inch flange | | |
| | | | | 7 | 7 bags | | | 8F | 8 inch flange | | |
| | | | | 8 | 8 bags | | | | | | |
| | | | | 9 | 9 bags | | | | | | |

Specifications are subject to change without notification. For User Responsibility Statement, see www.parker.com/safety

© 2017 Parker-Hannifin Corporation
Industrial Process Filtration - North America
All Rights Reserved

Fulflo is a registered trademark of Parker-Hannifin Corporation
Viton is a registered trademark of E.I. DuPont de Nemours & Co., Inc.

